

Signal and Alarm: Obstacle Light, EOB Series



Flameproof
Zone 1 & 2 - 21 & 22

Application

The EOB obstacle lights are designed for aviation warning purpose. They are suitable for installation on towers or tall buildings in zone 1, 2 and zone 21, 22 hazardous areas.

Specification

Body material : Marine grade copper-free aluminium alloy with polyester powder coated, RAL 7032 (grey)
Globe : Borosilicate glass
Filter : Plastic
Guard, bolts : Stainless steel
Seal gasket : Silicone



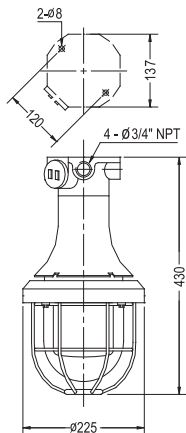
Ceiling mounting

Pendant mounting

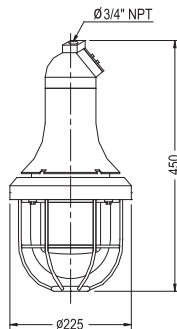


Bracket mounting

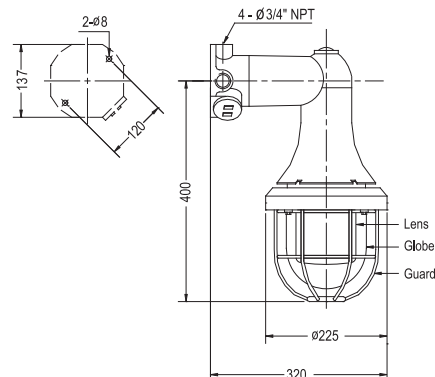
Dimension



Ceiling mounting



Pendant mounting



Bracket mounting

Technical Data

Hazardous Area	Gas	Dust
Zones	1 & 2	21 & 22
Conforming to ATEX	Ex d IIB T6/ T5 Gb	Ex tb IIIC T80°C/ T100°C Db IP66
Symbol of Protection ATEX		
Compliance with	Equipment and protective systems intended for use in potentially explosive atmospheres, Directive 2014/34/EU	
Standards	EN 60079-0:2012+A11:2013, EN 60079-1:2014, EN 60079-31:2014	
Ambient Temperature	-20°C to +55°C	
Index of Protection	IP66	
Entries	Ø3/4" NPT	
Mounting	Ceiling, Pendant or Bracket mounting	
Rated Voltage	220V.ac 50Hz.	

Catalogue Number Logic

EOB	-				
Series		Lamp Watt (see catalogue number table)	Type	Lens colour	Mounting
			IN Incandescent CF Compact fluorescent LED LED bulb	R Red O Orange G Green	C Ceiling P Pendant B Bracket

Ordering Requirements

Cat. No.	Lamp Watts	Temp. Class (for zone 1 & 2)		Max. Surface Temp.* (for zone 21 & 22)		Volume (dm³)	Approx. Weight (kgs.)
		Ta 40 °C	Ta 55 °C	Ta 40 °C	Ta 55 °C		
Incandescent Lamp							
EOB-60IN □□	60W.	T6	T5	T80°C	T100°C	3.92	7.95
EOB-100IN □□	100W.						
Compact Fluorescent Lamp							
EOB-11CF □□	11W.	T6	T5	T80°C	T100°C	3.92	7.89
EOB-15CF □□	15W.						
LED Bulb							
EOB-04LED □□	4W.	T6	T5	T80°C	T100°C	3.92	7.75
EOB-06LED □□	6W.						
EOB-08LED □□	8W.						
EOB-10LED □□	10W.						

Remark * : The maximum surface temperatures are specified for dust free condition. The dust layer which may cover around the lighting fixture will cause to higher surface temperature.