

Switches and Plugs: Snap Switches, ESN Series



Flameproof and Dust protection by enclosure

Zone 1 & 2 – 22

Application

The ESN snap switches are designed

- for disconnecting means of small AC or DC appliances or lighting circuits.
- to prevent arcing of enclosed switches during connect and disconnect operation in zone 1, 2 and zone 21, 22 hazardous areas.

Specification

Body, cover : Marine grade copper-free aluminium alloy with polyester powder coated, RAL 7032 (Grey)

Bolts : Stainless steel

Technical Data

Hazardous Area	Gas	Dust
Zones	1 & 2	21 & 22
Conforming to ATEX	Ex II 2G	Ex II 3D
Symbol of Protection ATEX	Ex db IIB T6/T5 Gb	Ex tc IIIB T85°C/ T100°C Dc IP54
Compliance with	Equipment and protective systems intended for use in potentially explosive atmospheres, Directive 2014/34/EU	
Standards	EN 60079-0:2012+A11:2013, EN 60079-1:2014, EN 60079-31:2014	
Ambient Temperature	-20°C to +55°C	
Index of Protection	IP54	
Entries	Ø1/2", Ø3/4" NPT or Ø1" NPT	
Mounting	Wall mount	

Catalogue Number Logic

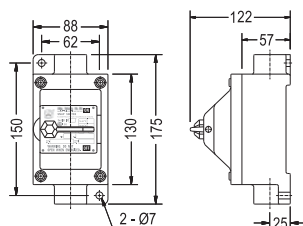
ESN	■	-	■ ■ ■	-	□ ■ ■	
Series	Gang		Ampere		Entries	
1	Single gang	210	10A. 2-poles	Dead-end (Top)	Dead-end (Bottom)	Through-feed
2	Two gangs	215	15A. 2-poles	TN1 Ø1/2" NPT	BN1 Ø1/2" NPT	CN1 Ø1/2" NPT
		220	20A. 2-poles	TN2 Ø3/4" NPT	BN2 Ø3/4" NPT	CN2 Ø3/4" NPT
		230	30A. 2-poles	TN3 Ø1" NPT	BN3 Ø1" NPT	CN3 Ø1" NPT

Ordering Requirements

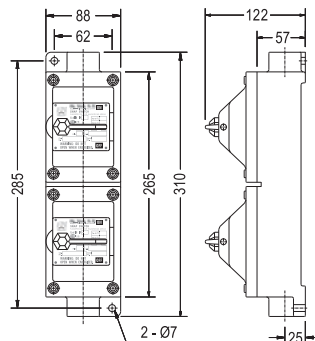
Ampere Rating (2-Poles)	Entries	Cat. No.		Volume (dm ³)	Approx. Weight (kgs.)
		Dead-end	Through-feed		
Single Gang					
10A.	Ø1/2" NPT	ESN1-210-□ N1	ESN1-210-CN1	0.51	1.55
	Ø3/4" NPT	ESN1-210-□ N2	ESN1-210-CN2		
15A.	Ø1/2" NPT	ESN1-215-□ N1	ESN1-215-CN1		
	Ø3/4" NPT	ESN1-215-□ N2	ESN1-215-CN2		
20A.	Ø1/2" NPT	ESN1-220-□ N1	ESN1-220-CN1		
	Ø3/4" NPT	ESN1-220-□ N2	ESN1-220-CN2		
30A.	Ø1/2" NPT	ESN1-230-□ N1	ESN1-230-CN1		
	Ø3/4" NPT	ESN1-230-□ N2	ESN1-230-CN2		
Two Gang					
10A.	Ø3/4" NPT	-	ESN2-210-CN2	1.03	2.65
	Ø1" NPT	ESN2-210-□ N3	ESN2-210-CN3		
15A.	Ø3/4" NPT	-	ESN2-215-CN2		
	Ø1" NPT	ESN2-215-□ N3	ESN2-215-CN3		
20A.	Ø3/4" NPT	-	ESN2-220-CN2		
	Ø1" NPT	ESN2-220-□ N3	ESN2-220-CN3		
30A.	Ø1" NPT	-	ESN2-230-CN3		

Dimension

Single gang



Two gang



Single gang



Two gangs

